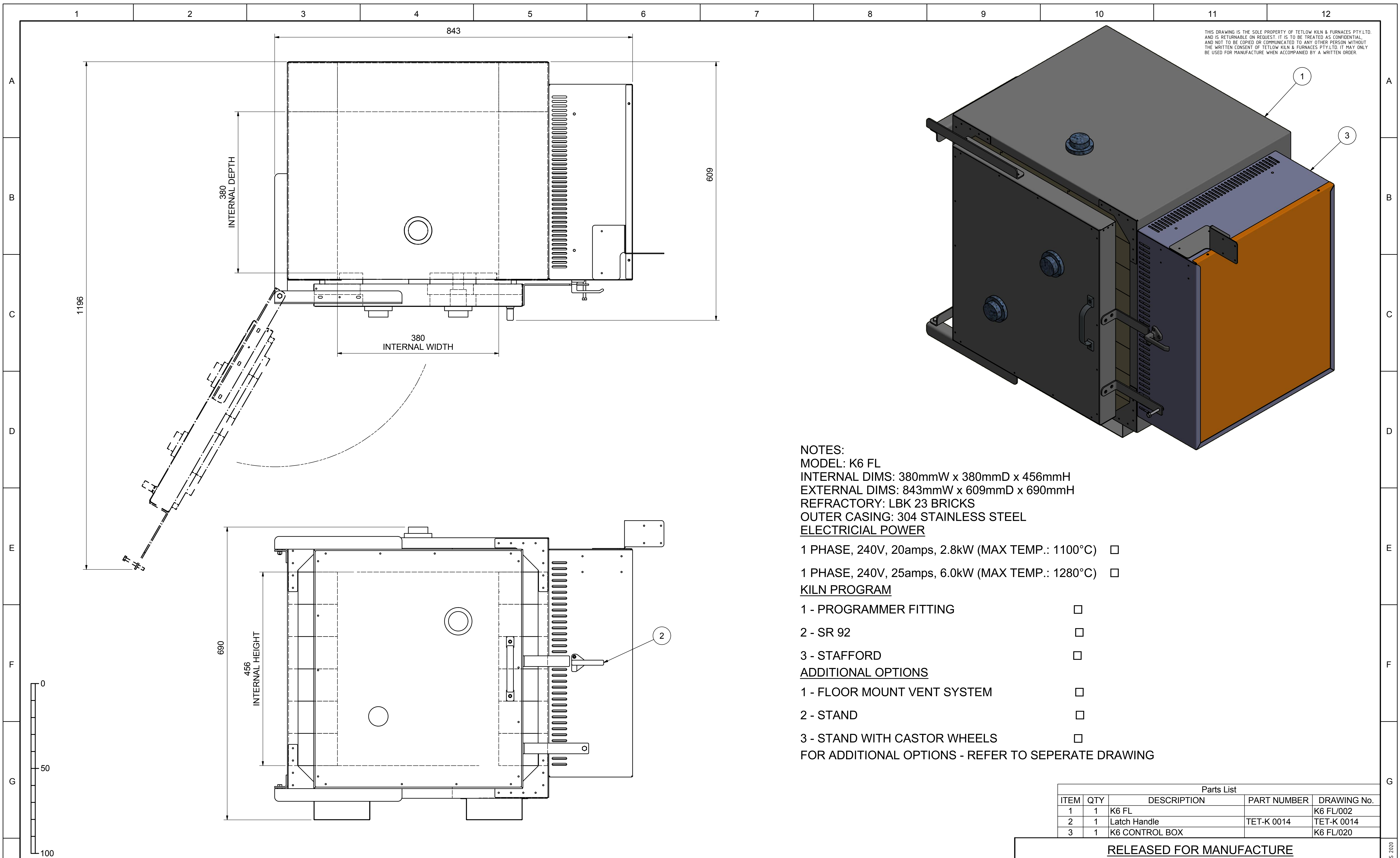


THIS DRAWING IS THE SOLE PROPERTY OF TETLOW KILN & FURNACES PTY.LTD. AND IS RETURNABLE ON REQUEST. IT IS TO BE TREATED AS CONFIDENTIAL, AND NOT TO BE COPIED OR COMMUNICATED TO ANY OTHER PERSON WITHOUT THE WRITTEN CONSENT OF TETLOW KILN & FURNACES PTY.LTD. IT MAY ONLY BE USED FOR MANUFACTURE WHEN ACCOMPANIED BY A WRITTEN ORDER.



- NOTES:**
MODEL: K6 FL
INTERNAL DIMS: 380mmW x 380mmD x 456mmH
EXTERNAL DIMS: 843mmW x 609mmD x 690mmH
REFRACTORY: LBK 23 BRICKS
OUTER CASING: 304 STAINLESS STEEL
ELECTRICIAL POWER
- 1 PHASE, 240V, 20amps, 2.8kW (MAX TEMP.: 1100°C)
 - 1 PHASE, 240V, 25amps, 6.0kW (MAX TEMP.: 1280°C)
- KILN PROGRAM**
- 1 - PROGRAMMER FITTING
 - 2 - SR 92
 - 3 - STAFFORD
- ADDITIONAL OPTIONS**
- 1 - FLOOR MOUNT VENT SYSTEM
 - 2 - STAND
 - 3 - STAND WITH CASTOR WHEELS
- FOR ADDITIONAL OPTIONS - REFER TO SEPERATE DRAWING

Parts List				
ITEM	QTY	DESCRIPTION	PART NUMBER	DRAWING No.
1	1	K6 FL		K6 FL/002
2	1	Latch Handle	TET-K 0014	TET-K 0014
3	1	K6 CONTROL BOX		K6 FL/020

RELEASED FOR MANUFACTURE

		TETLOW KILNS & FURNACES A.B.N. 26 166 832 3000 54		A1
	DESIGNED: C.HILLIER DRAWN: C.HILLIER DATE: 26/05/2020 CHECKED: D.BOISSEZON APPROVED: T.NASH SCALE: 1:4	K6 FL KILN GENERAL ARRANGEMENT	DRG. NO. K6 FL/001	

NO	DESCRIPTION	REV BY	DATE	APPR BY	WELD NOTES	GENERAL NOTES	TOLERANCES:	(UNLESS OTHERWISE SPECIFIED)
A	ORIGINAL RELEASE - NOT FOR MANUFACTURE	C.H.	26 MAY 20		1. CARBON STEEL STRUCTURAL WELDING TO AS 1554.1 G.P. WITH 100% VISUAL EXAMINATION, 5% VISUAL INSPECTION U.N.O. 2. STAINLESS STEEL STRUCTURAL WELDING TO AS 1554.6 CATEGORY 2, CLASS C, SURFACE FINISH III WITH 100% VISUAL SCANNING, 5% VISUAL EXAMINATION U.N.O. 3. ALL WELDS TO BE CONTINUOUS 0.7 x MIN. PLATE THICKNESS U.N.O. 4. WELD DETAILS COVERED BY NOTES 1,2 & 3 ARE NOT SHOWN ON THE DRAWING 5. CARBON STEEL WELDING CONSUMABLES TO AS 1554.1 SECTION 2.3 6. STAINLESS STEEL WELDING CONSUMABLES TO AS 1554.6 SECTION 2.3 7. ELECTRODE SELECTION AS PER AS 1554.6 TABLE 4.5.1 U.N.O.	1. ALL ROLLED STEEL SECTIONS TO BE IN ACCORDANCE WITH AS3679.1-300 AND CURRENT BHP STRUCTURAL SHAPES 2. ALL RHS & CHS TO BE GRADE 350 TO AS1163 3. ALL BOLTS AND NUTS TO BE IN ACCORDANCE WITH AS1111,AS1112, AS1110,AS1252 UNLESS OTHERWISE NOTED. 4. DO NOT SCALE	NON MACHINED SURFACES ±2 MACHINED SURFACES ±0.3 ONE DECIMAL PLACE ±1 NO DECIMAL PLACE ±0.5 ANGLES & SQUARENESS ±0.5	
B	RELEASED FOR MANUFACTURE	C.H.	26 MAY 20	T.N.				

©COPYRIGHT TETLOW KILNS & FURNACES 2020